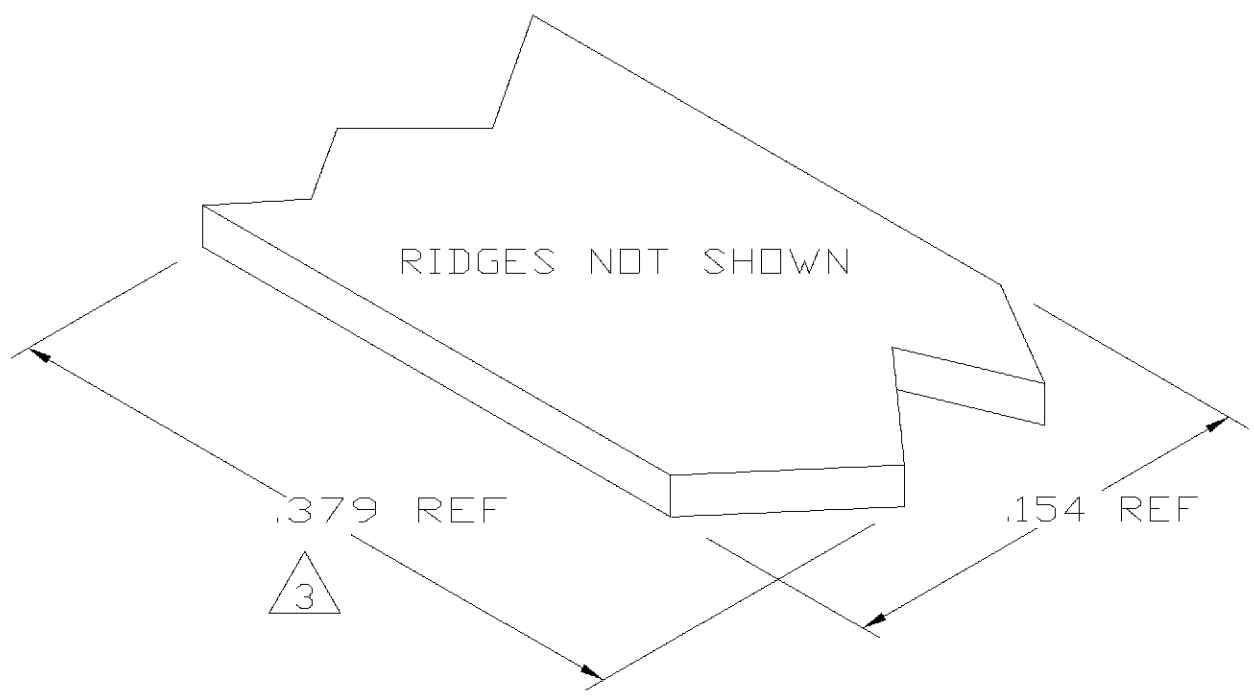
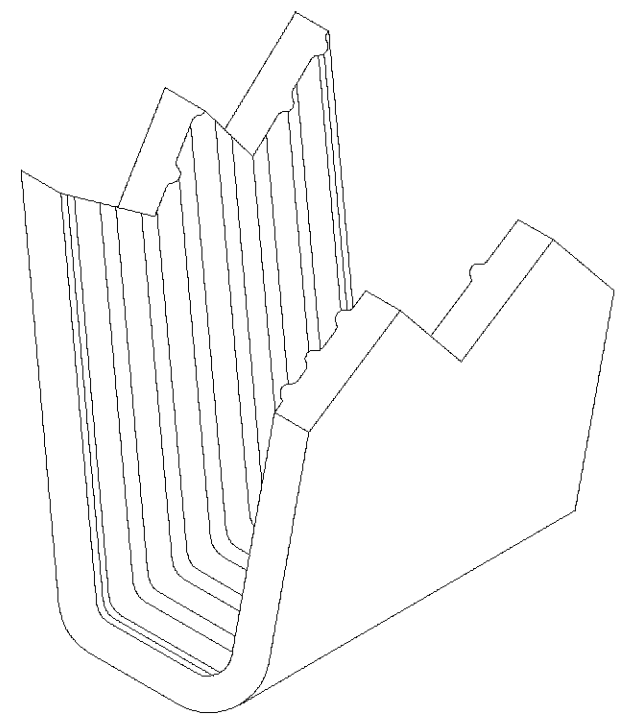
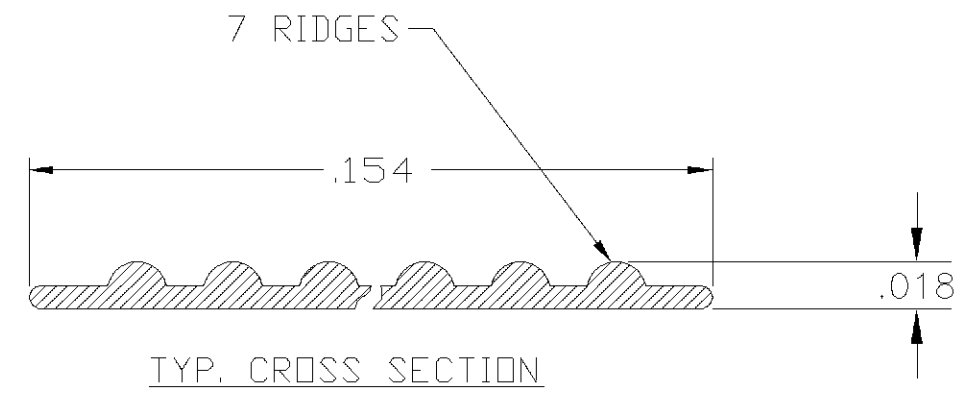


THIS DRAWING IS UNPUBLISHED. RELEASED FOR PUBLICATION
 © COPYRIGHT BY TYCO ELECTRONICS CORPORATION. ALL RIGHTS RESERVED.

| LOC | DIST | REVISIONS | | | |
|-----|------|-------------|---------------------------|---------|----------|
| P | LTR | DESCRIPTION | DATE | DWN | APVD |
| AF | 50 | 0 | TRANSFERED TO TYCO FORMAT | 07MAY02 | MF EH |



- 1 CRIMPBAND MATERIAL PROVIDED IN CONTINUOUS STRIP.
 - 2 REFERENCE DESCRIPTIVE PART NUMBER L092D18A.
- 3 BLANK LENGTH DETERMINED BY 092 TOOLSET.



PARTIAL FORMED VIEW (REF)
 FORMED BY APPLICATION TOOLING

1601694-1
 PART NUMBER

| | | | | |
|--|--|--------------------------------------|---|-----------|
| THIS DRAWING IS A CONTROLLED DOCUMENT. | | DWN MICHAEL S. FEHER 07MAY2002 | Tyco Electronics Corporation Harrisburg, PA 17105-3608 | |
| DIMENSIONS: INCHES | TOLERANCES UNLESS OTHERWISE SPECIFIED: | CHK EDWARD HOWARD 07MAY2002 | NAME - | |
| | 0 PLC ± - | APVD EDWARD HOWARD 07MAY2002 | PRODUCT SPEC - | |
| | 1 PLC ± - | | APPLICATION SPEC - | |
| | 2 PLC ± - | | SIZE | CAGE CODE |
| | 3 PLC ± .005 | | A3 | 00779 |
| | 4 PLC ± - | | DRAWING NO | C-1601694 |
| | ANGLES ± - | | RESTRICTED TO | |
| MATERIAL UNS C72500 CU-NI ALLOY | FINISH NONE | WEIGHT - | - | |
| CUSTOMER DRAWING | | SCALE 1:1 | SHEET 1 OF 1 | REV 0 |